



Profiled Cap To Cover Intersecting Point Between Flashing and Roofing Iron.

Flashing To Continue Under 100mm, Top Edge of Flashing Under Roofing Between Iron and Paper

Framed Support Around Roof As Per E2/AS1 8.1.7

Proprietary Designed Flashing System By Suntrenz Skylights

Roofing Sealant/Foam Weather Strip Applied Between Proprietary Flashing and Roofing Iron
Fasteners To Pass Through Sealant at Leading Edge.

130 -200mm, Size Varies Per Roofing Profile & Suntube

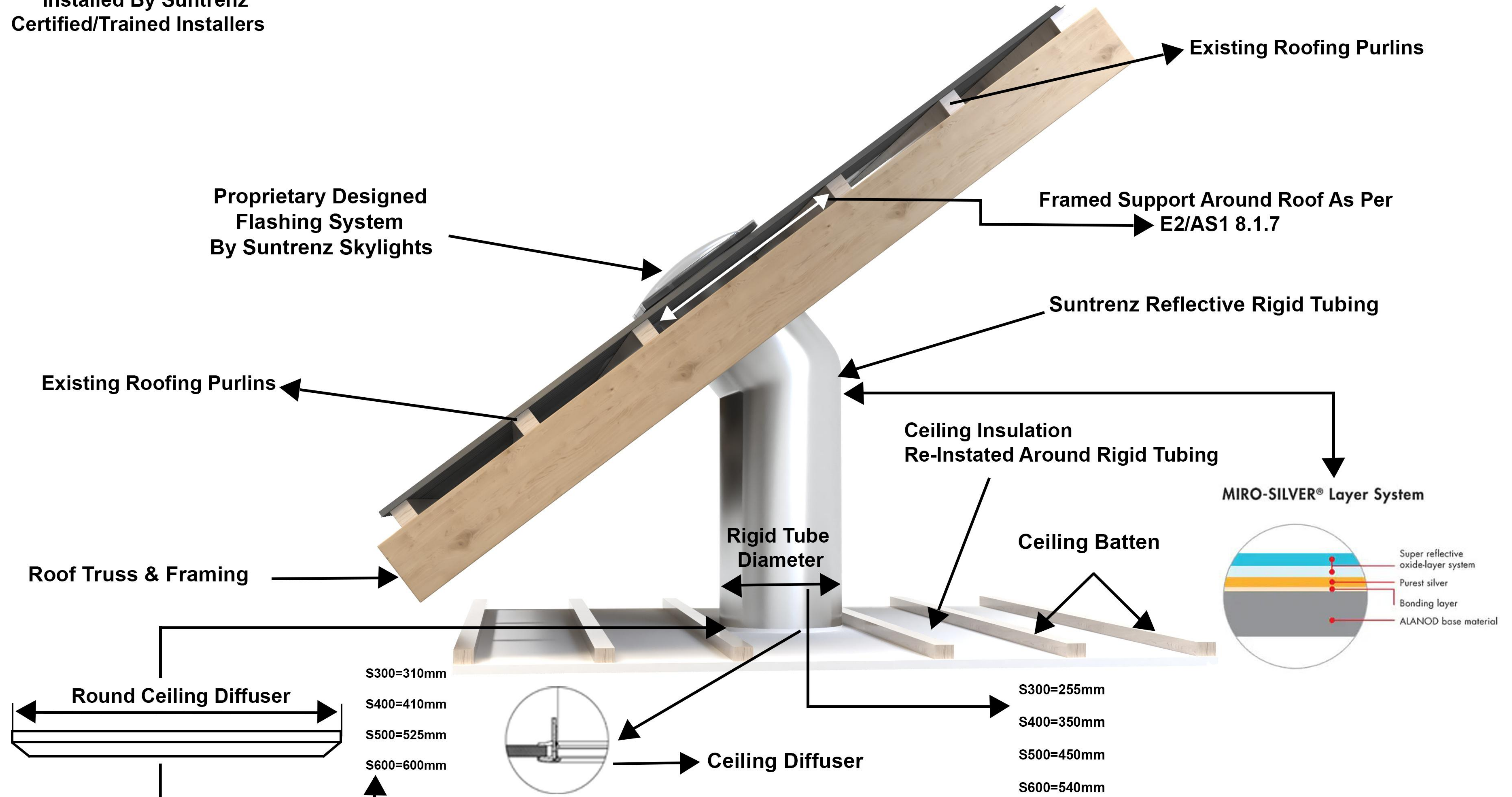
No. 12 Tex Screw with Profiled Washer Through Flashing into Metal Dek

Trapezoidal Roofing Profile

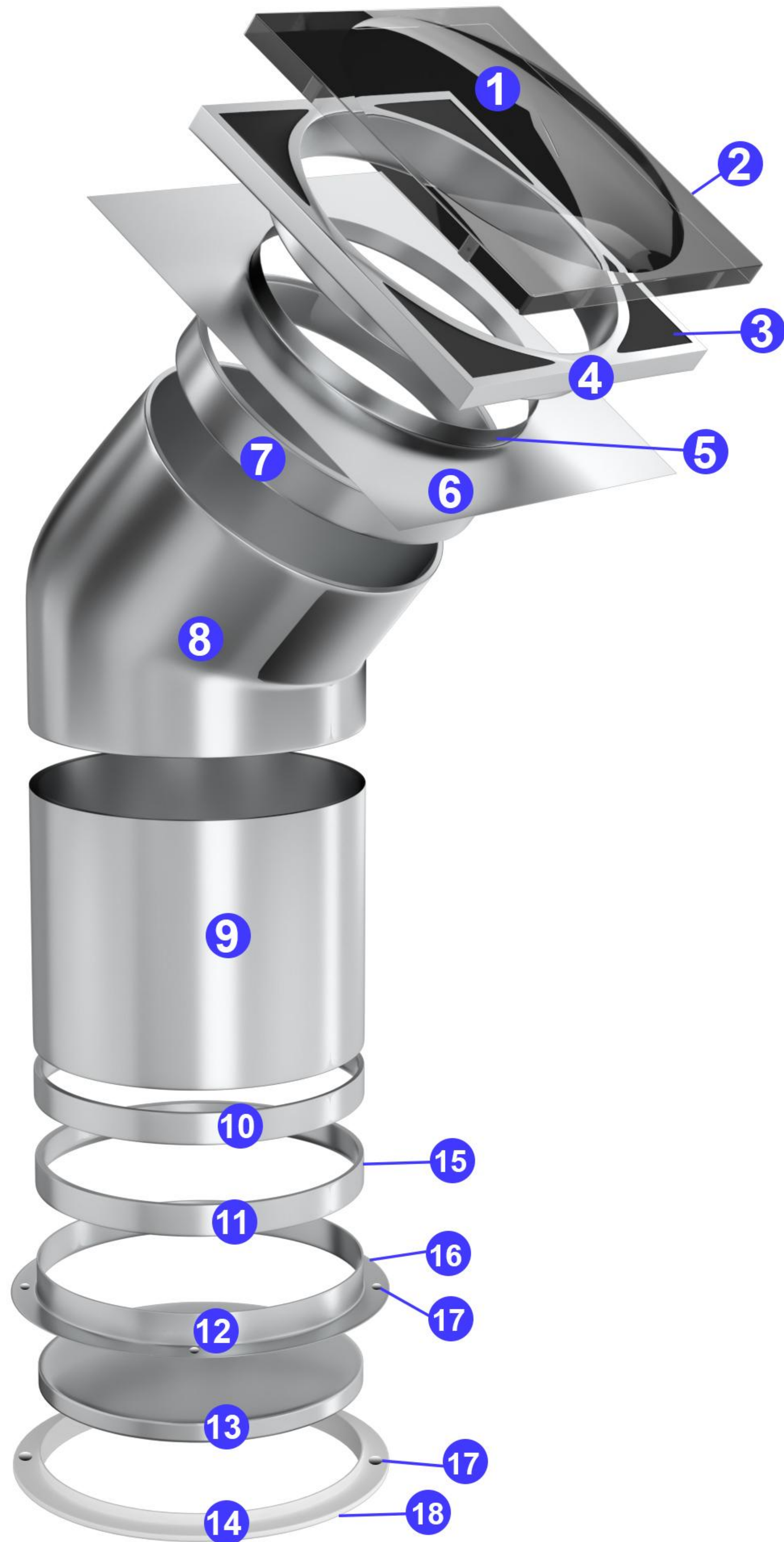
Installed By Suntrenz Certified/Trained Installers

	New Zealand 0508 777 222	
	Ph: 0508 777 222 Email: sales@suntrenz.co.nz	

Installed By Suntrenz
Certified/Trained Installers



Suntube with Rigid98



- 1) **DOMES** – U.V. Stabilized Grade 1 Acrylic (Altuglas – HFI7) or Specialised UV Grade Polycarbonate (Sabic SLX)
- 2) **SCREWS x 8** – to fasten Dome (Class 3 corrosion resistant).
- 3) **VENT/SOLID TABS** – ASA Polymer (Luran S 778 T).
- 4) **BREATHER FRAME** – ASA Polymer (Luran S 778 T).
- 5) **SEAL** – Construction Grade Polyurethane (Bostik Seal'N'Flex 1).
- 6) **SOAKER TRAY** – 55 Colourbond/Fibreglass/UV Stabilised ABS Thermoplastic
- 7) **UPPER RING** – Rigid98 (Miro Silver).
- 8) **ANGLE ADAPTOR: upto 45° or 90°** – Rigid98 (Miro Silver).
- 9) **RIGID LENGTHS: 625mm or 1250mm** – Rigid98 (Miro Silver).
- 10) **LOWER RING** – Rigid98 (Miro Silver).
- 11) **LOCKING RING** – White ABS Thermoplastic (BASF GP22).
- 12) **CEILING FRAME** – White ABS Thermoplastic (BASF GP22).
- 13) **DIFFUSERS x 2** – 3mm PMMA (Acrylic) with Seadrift texture.
- 14) **DIFFUSER HOLDER** – White ABS Thermoplastic (BASF GP22).
- 15) **SCREWS** – to retain Flexi-tube Locking Ring to Ceiling Frame.
- 16) **SCREWS** – to fasten Ceiling Frame, includes lock lug and cover cap
- 17) **MAGNET** – N45 Grade / Rare Earth (Neodymium Iron Boron).
- 18) **FOAM SEAL** – 3mm x 6mm Foam.
- 19) **REFLECTIVE RING** – 0.45mm 430BA Stainless Steel.
- 20) **TAPE** – PVC Duct Tape (TESA 4050).
- 21) **FLEXI-TUBE** – Composite 3 layers including metalized polyester, aluminium foil and spring wire.

Suntube with Flexi-Tube

